

# Emulgade® Sucro

## Treat Your Senses

**BASF**  
The Chemical Company

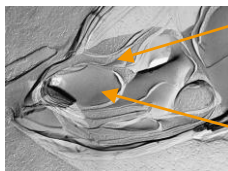
### The delicious skin touch

- Mild emulsifier, extremely gentle for the skin
- Non-ionic, non-ethoxylated emulsifier
- Food industry background
- Improve moisturizing properties
- Very delicate skin feel and after feel



### Product advantages

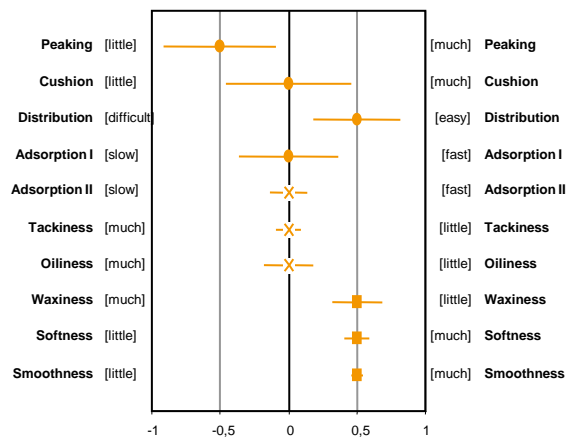
- Polystearate composition targeted to tri, tetra and higher esters, assures to this product an amphiphile behaviour which precludes the need for any adjustment with several grades
- Solvent free process
- Easy to handle
- No preservative



Multilamellar structure in the continuous phase entraps water for a longer term delivery

Oil droplet surrounded by lamellar phase limits the risk of coalescence

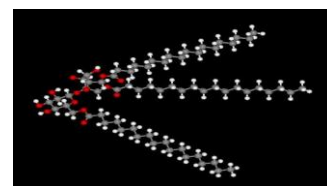
**Benefits: long term stable emulsion and skin moisturization**



Each line shows a pairwise comparison in a variable (median +/- abs. dev. from med.). The sample space is the ordinal scale (-1; -0.5; 0; 0.5; 1). The symbol depends on the p-value of the Wilcoxon test, X means 'no test computed'.

FR00004/08.4001 vs. FR00004/08.4200

**Lower waxiness, higher softness and smoothness**  
➔ **velvety to powdery feeling**



### Brief Overview Emulgade® Sucro

INCI: Sucrose Polystearate (and) Hydrogenated Polyisobutene  
Appearance: white pellets  
Rec. Dosage: 1.0–5%

### Application Forms

- Lotions
- Creams
- Butters
- Balms

### Application Fields

- Face Care
- Body Care
- Sun Care
- Baby Care
- Color Cosmetics

### Formulations

- Soothing & Anti Irritation Face Cream (FR004-07.223)
- Anti Wrinkles Restructuring Night Cream (FR0004-07.325)
- Eye Contour Gel Cream (FR004-07.802(2))
- Soothing Cleansing Lotion (FR004-07.420)

Although all statements and information in this advertisement are believed to be accurate and reliable, they are presented gratis and for guidance only, and risks and liability for results obtained by use of the products or application of the suggestions described are assumed by the user. The claims and supporting data provided in this publication have not been evaluated for compliance with any jurisdiction's regulatory requirements and the results reported may not be generally true under other conditions or in other matrices. Users must evaluate what claims and information are appropriate and comply with a jurisdiction's regulatory requirements. SELLER MAKES NO WARRANTY OF ANY KIND, EITHER EXPRESS OR IMPLIED, BY FACT OR LAW, INCLUDING WARRANTIES OR MERCHANTABILITY OR FITNESS FOR A PARTICULAR PURPOSE

**BASF Personal Care and Nutrition GmbH**  
Rheinpromenade 1  
40789 Monheim am Rhein  
Phone: +49-2173-4995-0